

Centurion *PLUS*™ CPC4 Download Guide using C4 File Transfer Utility

1.0 Background

- 1.1 The Centurion PLUS Control system consists of a Centurion *PLUS* Core (CPC4-1) and color touchscreen HMI.
- 1.2 The application software that represents the control logic is called Firmware and is transferred to the Centurion *PLUS* using the C4 File Transfer Utility software and a USB connection. Contact FW Murphy to obtain the correct firmware and display file for your controller.
- 1.3 The C4 File Transfer Utility software must be installed on the PC. Access the license agreement and installation from the web link below.

<http://www.fwmurphy.com/software/>

- 1.4 The USB Drivers for FW Murphy devices must be installed on the PC. If these have not been installed on the PC, visit the website link.

<http://www.fwmurphy.com/software/>

- 1.4.1 Click the link on the page below, and print this document for instructions on installing the USB driver.

[USB Driver Installation Guide - updated 01/2010 \(.pdf\)](#)

- 1.4.2 Click on the link on the page shown below.

[USB Drivers for Windows2000/XP/Server 2003/Vista \(v5.4.24 file size: 3.04 MB; updated 01/2010\)](#)

[USB Drivers for Windows 7 \(v5.4.24 file size: 2.64 MB; updated 01/2010\)](#)

- 1.4.3 Use the USB Driver Installation Guide to install the software and determine the COM port assignment for the Centurion *PLUS* controller on your PC. Remember this number for future firmware transfers.
- 1.5 Crimson® 2.0 software must be installed on the PC for the Display software download. Access the license agreement and installation from the web link below.

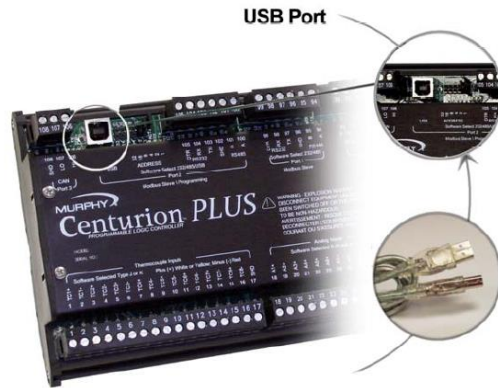
<http://www.redlion.net/Support/Downloads/SoftwareLibrary/Crimson2.html>

2.0 Downloading Centurion PLUS Core firmware (CPC4-1)

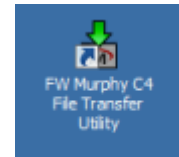
2.1 Connect the PC to the Centurion PLUS Core mounted inside the panel using a standard Type A to Type B USB cable.

2.2 Cycle power to the controller OFF and back to ON.

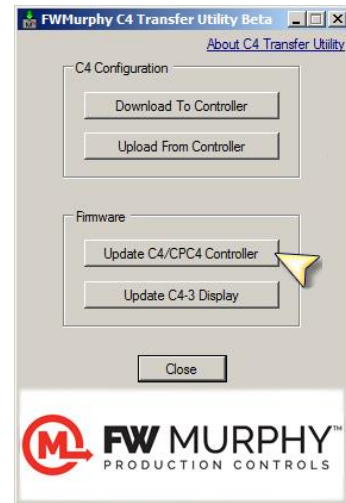
2.3 The Core is now ready to receive the download from the PC.



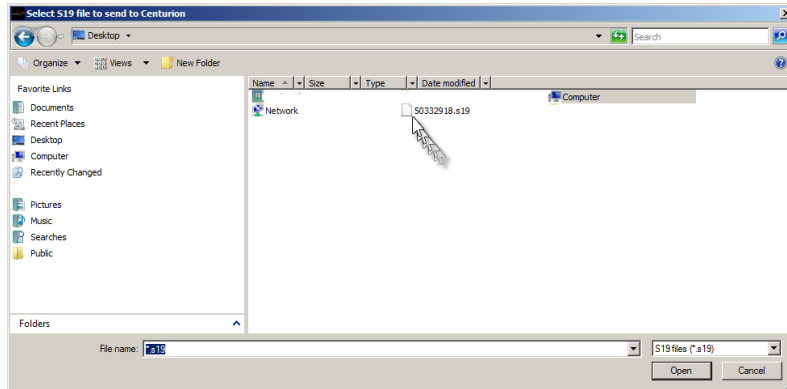
2.4 Run the C4 File Transfer Utility software by clicking the icon on the desktop.



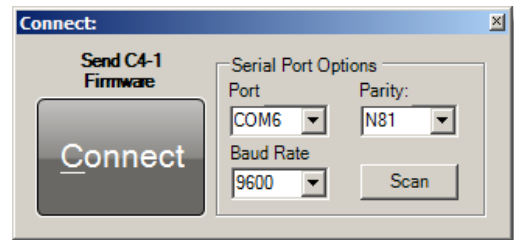
2.5 A pop-up window will appear...Click Transfer menu, then Click on Update C4/CPC4 Controller Firmware.



- 2.6 A new window will appear that allows navigation to the location of the Core CPC4-1 firmware file supplied by FW Murphy. Click OPEN. In the example below, the S19 firmware file is located on the desktop. Double click the S19 file.



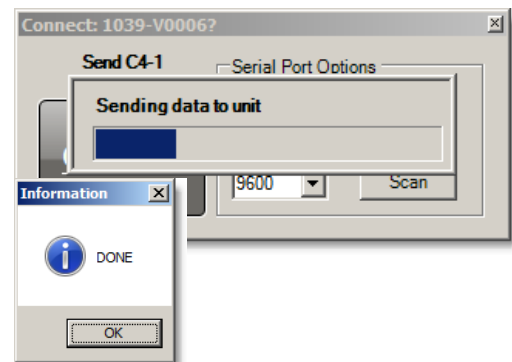
- 2.7 The Connect window appears. If unsure about these settings, click the SCAN button to scan the PC comm. ports for the correct Port number and baud rate settings*. Click CONNECT to proceed.



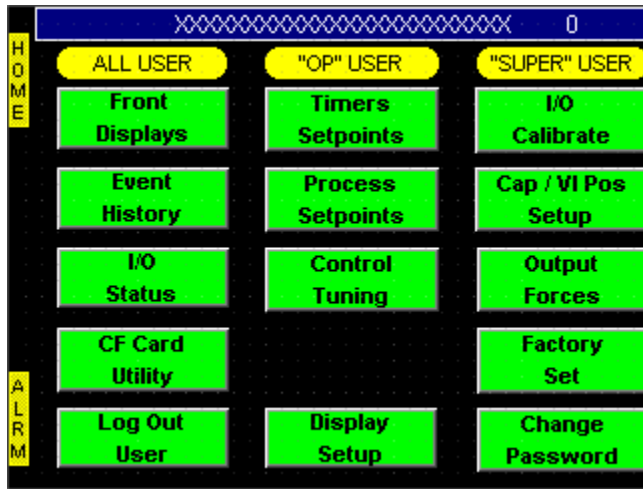
*If the SCAN button fails to detect the port number, pick the COM port assignment determined by the USB to Serial Bridge manually. **Refer to USB Driver Installation section 1.5 for instructions on determining the correct COM assignment for the PC.**

- 2.8 The next window will appear to begin the transfer process.

- 2.9 When the transfer operation is complete, the software will display DONE. Click OK to exit the window and complete the process.



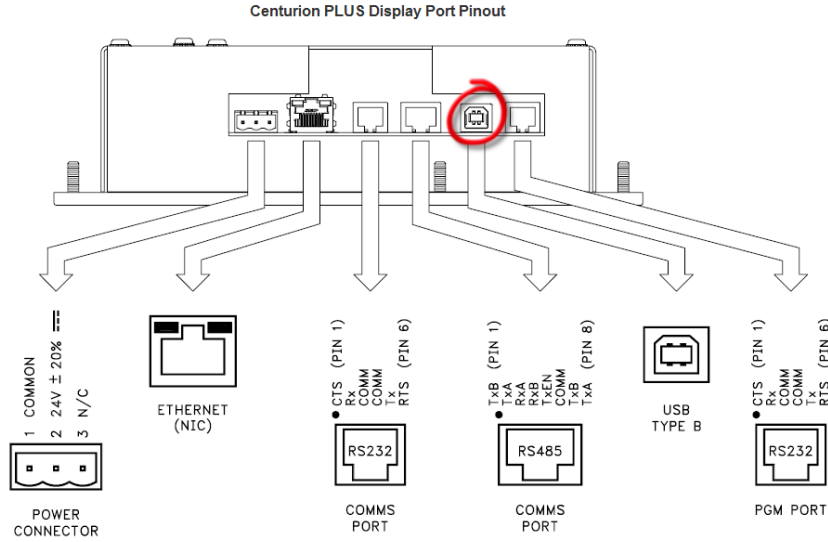
- 2.10 Remove the USB cable connected between the PC and the Core CPC4-1, then cycle power to the CPC4-1 OFF and back to ON to complete the firmware update process.
- 2.11 **IMPORTANT:** After installing the firmware and redownloading the configuration, a factory default command must be performed using the Centurion PLUS Display. To access this page, press the MENU key on the HMI.



- 2.12 Next press the Factory Set button on this page. A prompt will appear requiring login using SUPER as the name and the Super user passcode. Refer to the sequence of operation for the panel for proper login credentials.
- 2.13 After a successful login, follow the display commands to restore the factory settings to the system after a firmware update.

3.0 Downloading Software to Centurion PLUS Display

- 3.1 Make sure that Crimson[®] 2.0 software has been installed on the PC used for the download.
- 3.2 Connect the PC to the Centurion PLUS Display's USB port using a standard Type A to Type B USB cable and apply power to the Centurion Display.



- 3.3 The first time that the PC is connected to the Display, the USB driver must install on the PC. After the first installation, these steps will no longer be repeated. The following shows how to install Crimson[®] 2.0 USB driver successfully on a Windows XP operating system. If the operating system is different, installation procedure will be similar.

3.3.1 A new hardware wizard should pop up to help you install the driver so Windows can recognize the panel.

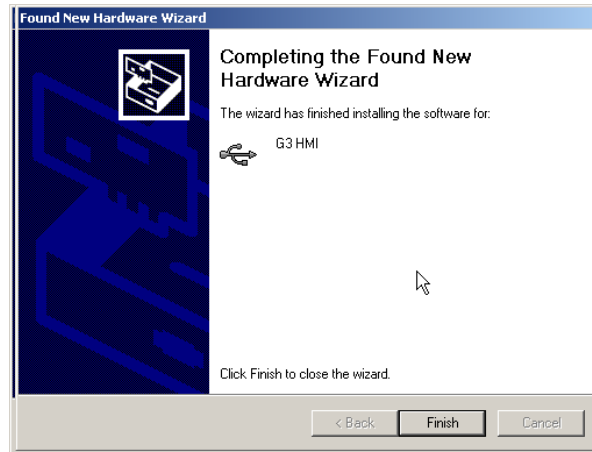
3.3.2 If the wizard does not pop up, please refer to the troubleshooting section of this document for more information.

3.3.3 The wizard might prompt to connect to the Internet for a software search. Select No, not this time and click Next.

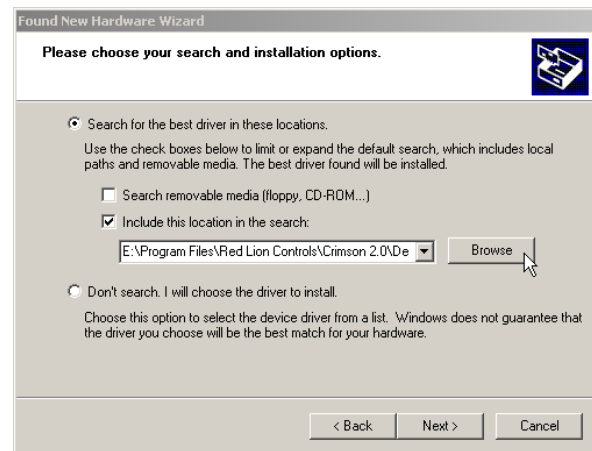


3.3.4 The following window asks for the preferred method to install the software.

3.3.5 Select Install from a list or specific Location and click Next. Using the recommended method will not find the driver as Windows only looks in the system folder and not where the driver file is (see introduction).

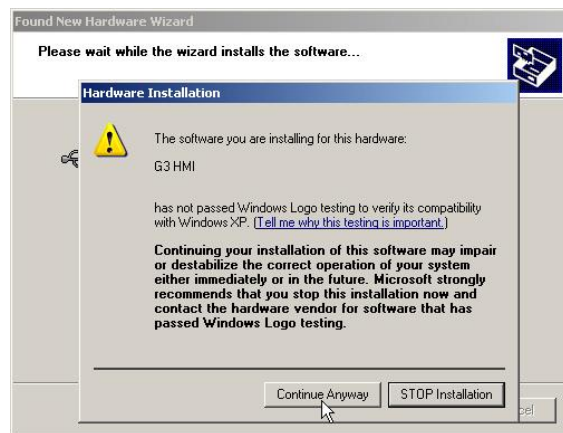


3.3.6 Since the advanced installation was selected, the wizard asks for the driver location. Make sure Search for the best driver is selected and include this location in the search check box is checked as shown.



3.3.7 Click on the Browse button to navigate to the driver location on your computer. The location should be C:\Program Files\Red Lion Controls\Crimson 2.0\Device\ if Crimson® 2.0 was installed under the default folder. The OK button can be clicked once a system file is detected in the folder. Click OK.

3.3.8 Click Next. The wizard will now start installing the driver. A warning window pops up to inform that the G3 HMI software has not passed Windows Logo testing. This window is only a warning that you are installing a driver that is not digitally signed by Microsoft; however, this is not required for proper operation. Click Continue Anyway.



3.3.9 The wizard finishes installing the driver and should read: The wizard has finished installing the software for G3 HMI.

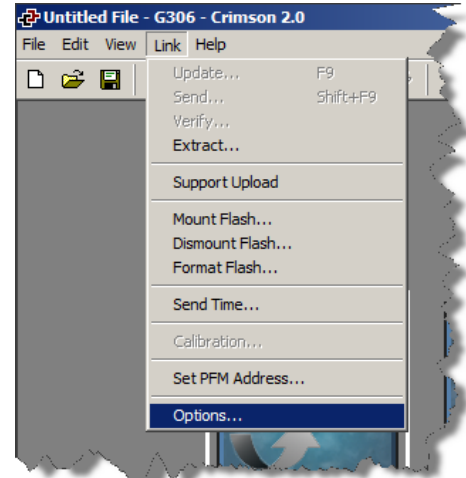
3.3.10 Click Finish to close the wizard window.

3.3.11 NOTE: Once this driver has completed installation, another hardware wizard might pop up prompting you to install the G3 Loader software. Complete this wizard in the same manner as above. Also, because the CompactFlash™ card is mounted in the Centurion PLUS Display, a third driver installation will be required for a mass storage device. All drivers must be properly installed for the panel to function properly.

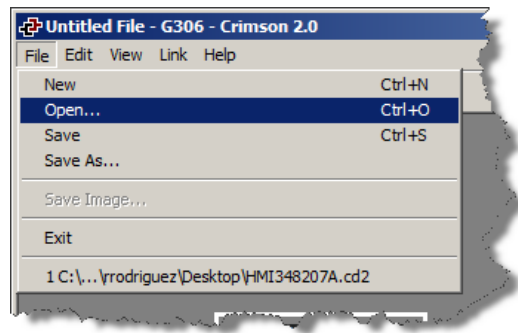
3.3.12 NOTE: If the new hardware wizard pops up during a database download or after a firmware upgrade, always go through the process of installing the driver. Firmware changes after a software upgrade might require a driver upgrade; hence the new hardware wizard pop-up will occur.

3.4 After the USB drivers are set up, run Crimson® 2.0 software by selecting Crimson® 2.0 from the START->PROGRAMS->Red Lion Controls -> CRIMSON 2.0. It is common to make a shortcut to this item on your desktop for future use.

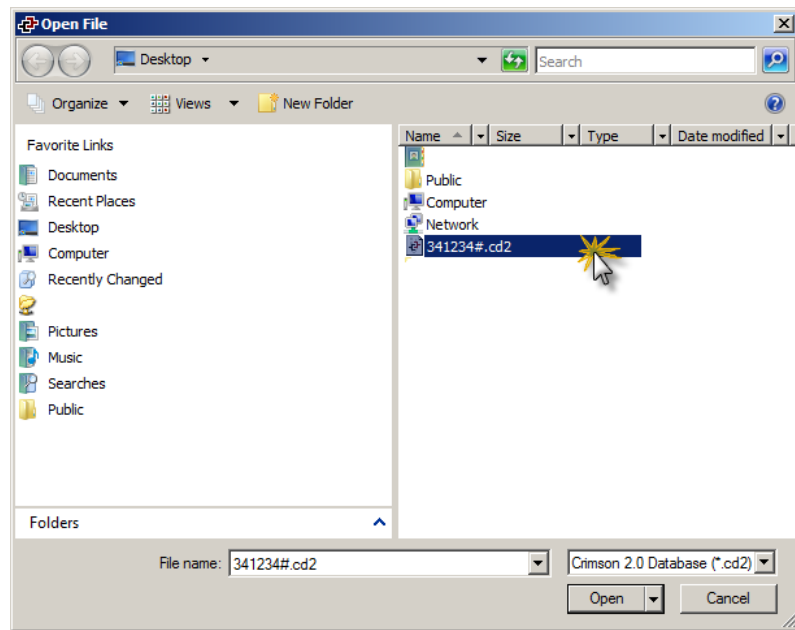
3.5 After the software runs, select the USB port as the download method. The download port can be selected via Link>Options menu.



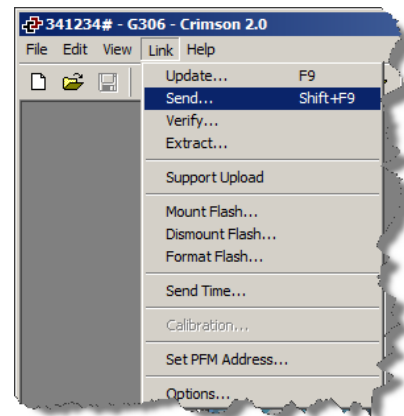
3.6 Next click on File menu and select OPEN.



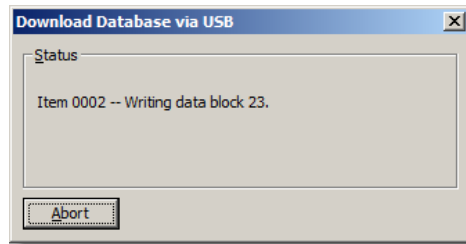
3.7 A new window appears that allows browsing. Find the *.CD2 Display software file. In this example it is on the desktop. Double click the file.



3.8 The Crimson® 2.0 software will load the CD2 file. Click on the Link menu, and click SEND.



3.9 The transfer to the display will begin. During this time the display will stop running the software. The PC software will show a new window as the download process proceeds.



3.10 When the download is complete, the Display will automatically load the new software. Close the Crimson® 2.0 software and disconnect the USB cable.

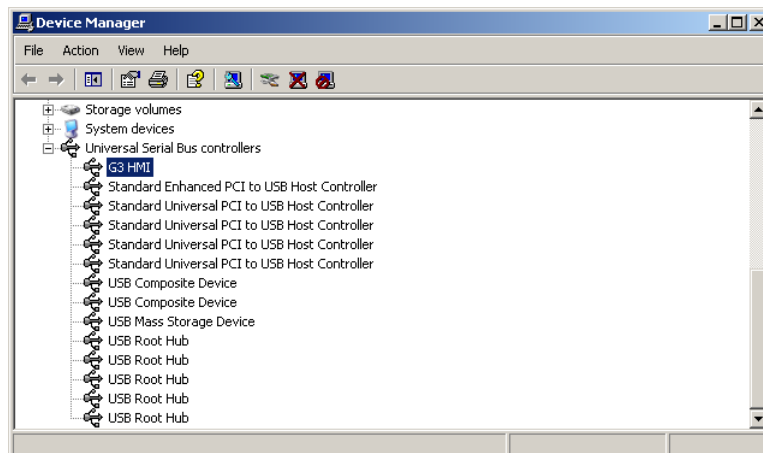
3.11 TROUBLESHOOTING: In the event that the new hardware wizard does not pop-up or downloading a database from Crimson® 2.0 fails, the following points have to be checked.

3.11.1.1 Make sure the USB port is selected in Crimson® 2.0 as the PC download port. Default is COM1. To change the port, click on Link>Options.

3.11.1.2 Open the Device Manager to check if the driver G3 HMI is present under Universal Serial Bus controllers.

3.11.1.3 Make sure the PC and the Centurion *PLUS* Display are connected and powered up. If the driver does not appear, click on Action>Scan for hardware changes to search for new devices. Install the driver if prompted. If no devices are found, contact technical support.

3.11.1.4 If the driver is present but download fails even though all products are connected and powered up, uninstall the driver, disconnect the Centurion *PLUS* Display and connect it again after a few seconds. The new hardware wizard should pop up. Proceed with the installation as described in the previous section of this document.



In order to consistently bring you the highest quality, full-featured products, we reserve the right to change our specifications and designs at any time. FW MURPHY product names and the FW MURPHY logo are proprietary trademarks. This document, including textual matter and illustrations, is copyright protected with all rights reserved. (c) 2017 FW MURPHY. A copy of our typical warranty may be viewed or printed by going to www.fwmurphy.com/warranty.

FW Murphy Production Controls

PO Box 470248 Tulsa, OK 74147 USA

5417 S. 122nd East Ave. Tulsa, OK 74146 USA

Tel. 918-317-4100

www.fwmurphy.com